

Couplings Connector

CP Series

CERTIFICATE



ECM 18 ATEX 3845 U

EX CODE

II 2G Ex db IIC Gb/II 2D Ex tb IIIC Db

DIRECTIVE

2014/34/EU

STANDARD

EN 60079-0/A11:2013, EN 60079-1:2014, EN 60529/A2:2013

INSTALLATION

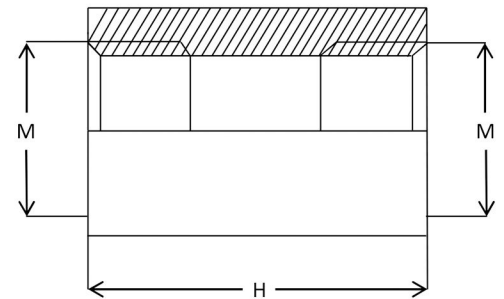
zone 1 - 2 - 21 - 22

CONSTRUCTION

Galvanized steel.
Thread NPT

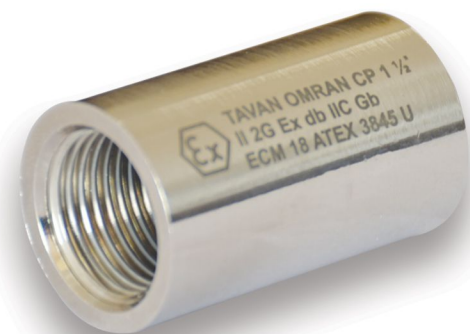
FEATURES

CP series couplings are used for connection of pipes with threaded male ends.



ACCESSORIES UPON REQUEST

Other materials.
Other threads.



Code	Size (CP) M	Dimensions H	MATERIAL
CP-1N	1/2"	45	GALVANIZED STEEL
CP-2N	3/4"	45	GALVANIZED STEEL
CP-3N	1"	50	GALVANIZED STEEL
CP-4N	1 1/4"	50	GALVANIZED STEEL
CP-5N	1 1/2"	50	GALVANIZED STEEL
CP-6N	2"	50	GALVANIZED STEEL
CP-7N	2 1/2"	75	GALVANIZED STEEL
CP-8N	3"	75	GALVANIZED STEEL

Couplings Connector

CP Series

CERTIFICATE



ECM 18 ATEX 3845 U

EX CODE

II 2G Ex db IIC Gb/II 2D Ex tb IIIC Db

DIRECTIVE

2014/34/UE

STANDARD

EN 60079-0/A11:2013, EN 60079-1:2014, EN 60529/A2:2013

INSTALLATION

zone 1 - 2 - 21 - 22

CONSTRUCTION

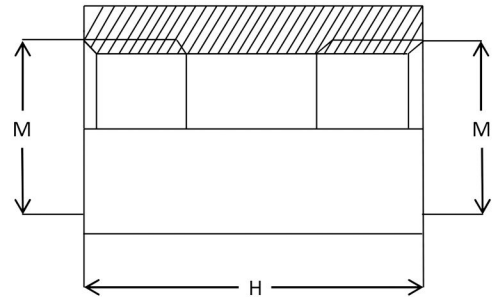
Galvanized steel.
Thread METRICE

FEATURES

EM series couplings are used for connection of pipes with threaded male ends.

ACCESSORIES UPON REQUEST

Other materials.
Other threads.



Code	Size(MM)	Dimensions	MATERIAL
	M	H	
CP-1M	M20	45	GALVANIZED STEEL
CP-2M	M25	45	GALVANIZED STEEL
CP-3M	M32	45	GALVANIZED STEEL
CP-4M	M40	45	GALVANIZED STEEL
CP-5M	M50	45	GALVANIZED STEEL
CP-6M	M63	45	GALVANIZED STEEL
CP-7M	M75	45	GALVANIZED STEEL
CP-8M	M90	45	GALVANIZED STEEL