

Nipple Connector

NP Series

CERTIFICATE



ECM 18 ATEX 3845 U

EX CODE

II 2G Ex db IIC Gb/II 2D Ex tb IIIC Db

DIRECTIVE

2014/34/EU

STANDARD

EN 60079-0/A11:2013, EN 60079-1:2014, EN 60529/A2:2013

INSTALLATION

zone 1 – 2 – 21 - 22

CONSTRUCTION

Galvanized steel or stainless steel (see table).

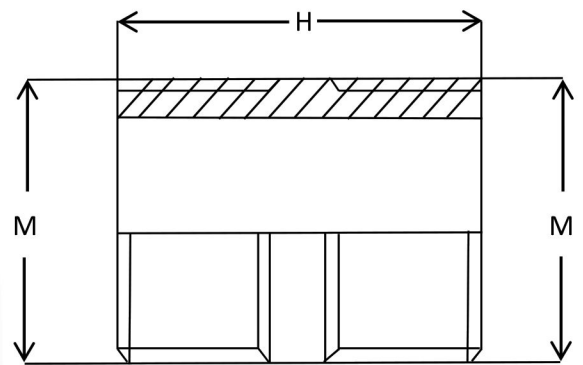
Thread METRICE

FEATURES

NP series nipples are used to connect equipment or other unions with female hub.

ACCESSORIES UPON REQUEST

Other threads.



Code	Size(MM)	Dimensions	MATERIAL
	M	H	
NP-1M	M20	45	GALVANIZED STEEL
NP-2M	M25	45	GALVANIZED STEEL
NP-3M	M32	45	GALVANIZED STEEL
NP-4M	M40	45	GALVANIZED STEEL
NP-5M	M50	45	GALVANIZED STEEL
NP-6M	M63	45	GALVANIZED STEEL
NP-7M	M75	45	GALVANIZED STEEL
NP-8M	M90	45	GALVANIZED STEEL

Nipple Connector	NP Series
CERTIFICATE 	ECM 18 ATEX 3845 U
EX CODE	II 2G Ex db IIC Gb/II 2D Ex tb IIIC Db
DIRECTIVE	2014/34/EU
STANDARD	EN 60079-0/A11:2013, EN 60079-1:2014, EN 60529/A2:2013
INSTALLATION	zone 1 – 2 – 21 - 22

CONSTRUCTION

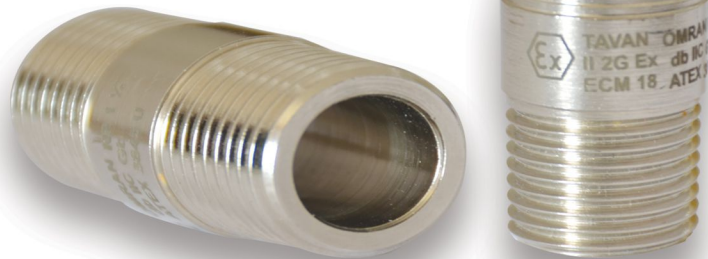
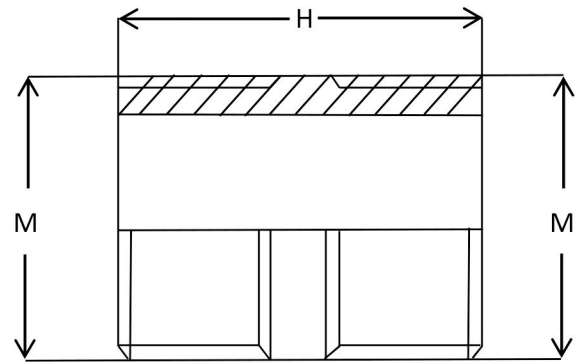
Galvanized steel or stainless steel (see table).
Thread NPT

FEATURES

NP series nipples are used to connect equipment or other unions with female hub.

ACCESSORIES UPON REQUEST

Other threads.



Code	Size (NPT)	Dimensions	MATERIAL
	M	H	
NP-1N	1/2"	45	GALVANIZED STEEL
NP-2N	3/4"	45	GALVANIZED STEEL
NP-3N	1"	50	GALVANIZED STEEL
NP-4N	1 1/4"	50	GALVANIZED STEEL
NP-5N	1 1/2"	50	GALVANIZED STEEL
NP-6N	2"	50	GALVANIZED STEEL
NP-7N	2 1/2"	75	GALVANIZED STEEL
NP-8N	3"	75	GALVANIZED STEEL